

Item

Title "Correct drawing of house occupied by the President in 1841" signed by Sam Houston
Author Carl G. von Iwonski -artist / Sam Houston - manuscript annotation
Published 1861
Format Paper
I.D. Number 1988.325.4
Department Archives

Treatment Overview

Start Date	July 1, 2015	Estimated Hours	10.00
End Date	August 31, 2015	Actual Hours	13.00
Conservator	Sarah Norris	Pieces Treated	1

Treatment Objective

Remove frame, mend, mat. Consider surface cleaning and blotter washing.

Item Description

Primary Support

Dimensions (cm)
Height 17.70
Width 25.20

Materials
• paper

Paper Color
• cream

Paper Style
• wove

Paper Manufacture
• machine-made

Secondary Support

Materials
• board

Support Color
• other

Image Area

Media
• graphite
• iron gall ink
• watercolor

Housing

Housing

- frame
- mat

Notes

Graphite drawing of Sam Houston's house in 1841 by noted artist C.G. Iwonski. Likeness certified in iron gall manuscript hand below drawing by Sam Houston, with Houston's signature.

Very light brown wash of watercolor or gouache applied over drawn chimney and wood planks.

Item Condition

Primary Support

Primary Support Damage

- darkening
- discoloration
- grime
- tears

Connection to Secondary Support

- causing tears
- causing staining

Notes

Darkening in displayed region is evident at mat edges.

Item attached to back mat with mucilage and paper tape.

Treatment Performed

Primary Support

Primary Support Treatment

- adhesive removal
- aqueous deacidify
- bleach
- dry clean
- dry under weight
- humidify
- wash
- mend (5)
- tape removal (3)

Housing

Folders

- folder
- mat

Notes

7/14: Remove frame and overmat, revealing that item is attached to back mat with adhesive and paper tape. - 30 min

7/15: Reverse mucilage and remove tape with methyl cellulose. Remove item from back mat. - 2 hr

7/20: Media is insoluble given:

-30 seconds exposure to water

-30 seconds exposure to ethanol

-30 second exposure to 50/50 water/ethanol mix

Ink tests light positive with bathophenanthroline paper.

Combine Library of Congress iron gall ink decision tree and other research to determine course of action: - 3 hr

-Gently surface clean

-Wash & deacidify

-Chelation not strongly indicated by bathophenanthroline paper test

-Bleach in light (non-chemically.) Mask iron gall inscription with Sharpie marker on mylar film.

-Mend

-Mat

7/21: Gently dry clean with eraser crumbs around edges of graphite image. - 30 min

8/7: Humidify, wash, and attempt bleaching indoors through window: not bright enough (average 284 lux.) - 2.5 hr

8/19: Spray with 50/50 EtOH/H₂O, bleach 2 hours outdoors on blotter moistened with deionized water conditioned to pH 8.0 with calcium hydroxide. Use protective UV film and iron gall masking. Light meter consistently maxed out at 31040 lux. Wash 10 minutes in deionized water conditions to pH 8.0 with calcium hydroxide. - 3 hr

8/20: Mend with tengujo tissue and wheat starch paste. - 1 hr

8/21: Mat. - 1 hr

Materials Used

Materials

Adhesives / Consolidants

- methyl cellulose
- wheat starch paste

Tissue

- Tengujo

Dry Cleaning

- eraser crumbs

Mylar

- .003

Water

- type 2 lab water

Chemicals

- calcium hydroxide
- ethanol

Board

- mat board

Notes

UV filtering film

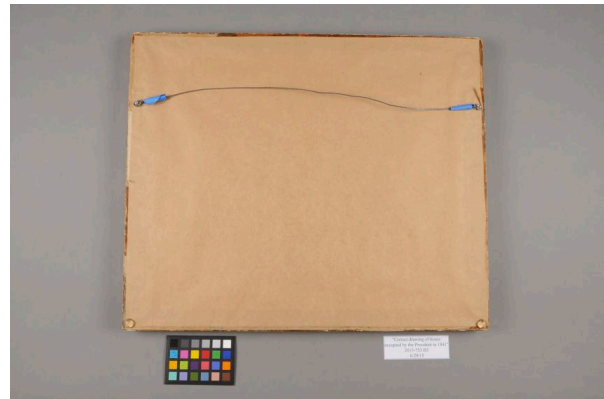
Sharpie marker on mylar film blocked iron gall ink from sun.

Treatment Photographs

Before Treatment



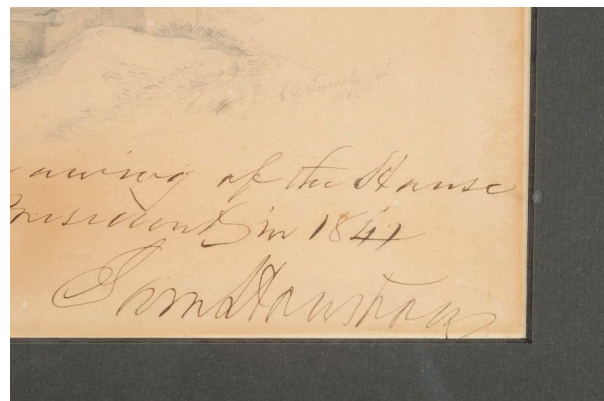
Framed drawing recto



Framed drawing verso



Tears

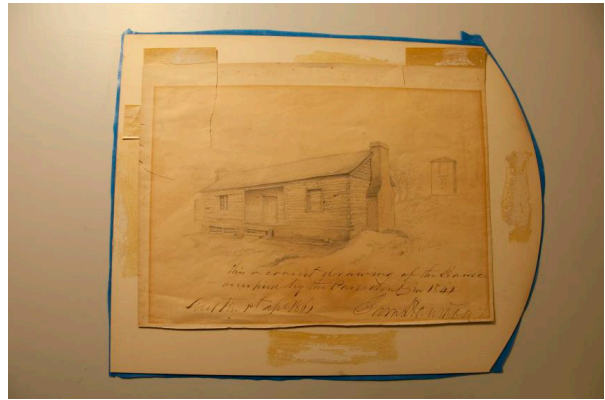


Artist's & Houston's signatures; mat lines

During Treatment



Frame, back paper removed



Item on backing board removed from frame



Removing mucilage



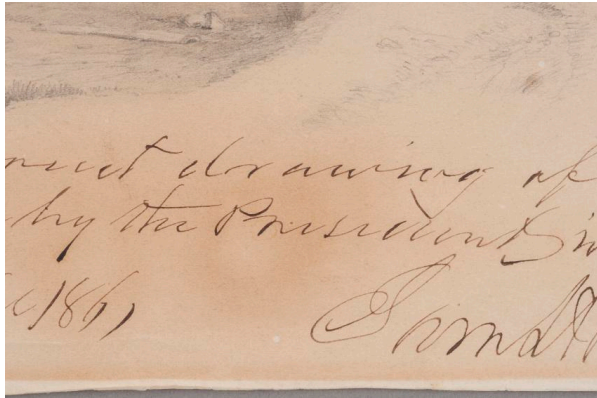
Removing paper tape



Dry cleaning



Pre-aqueous treatment & bleaching



Pre-aqueous treatment & bleaching...



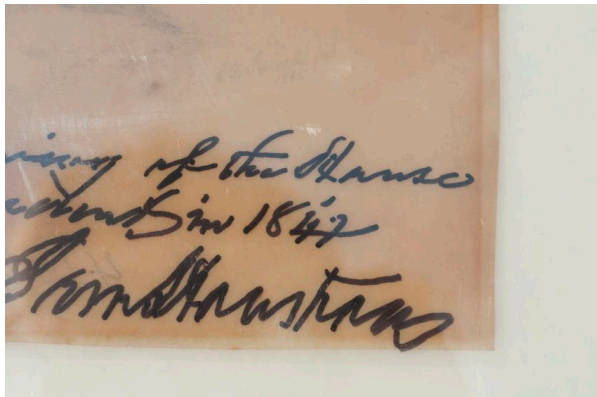
Pre-aqueous treatment & bleaching, wash...



Pre-aqueous treatment & bleaching, wash...



Washing and deacidifying



Light masking for iron gall ink - Sharpie...



Light bleaching with UV film and ink...

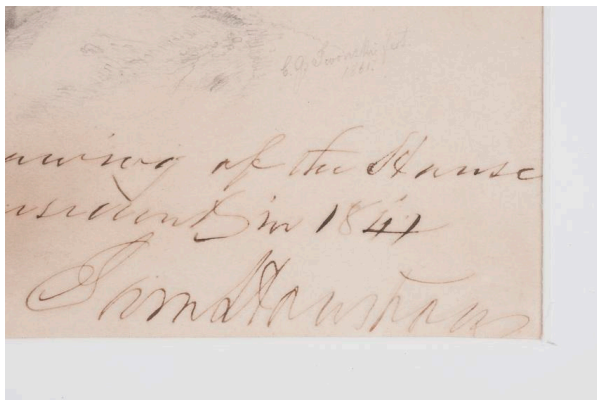
After Treatment



After treatment



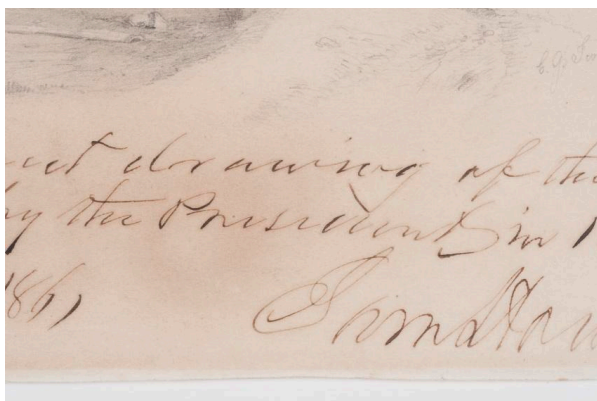
After treatment



detail



Window mat lifted



Stain reduced



Wash contrast enhanced



Edge discoloration reduced



Edge discoloration reduced